

Eichler Earthmovers Family Business 50 Year Celebration

EICHLER



landscaping



earthmoving



concrete

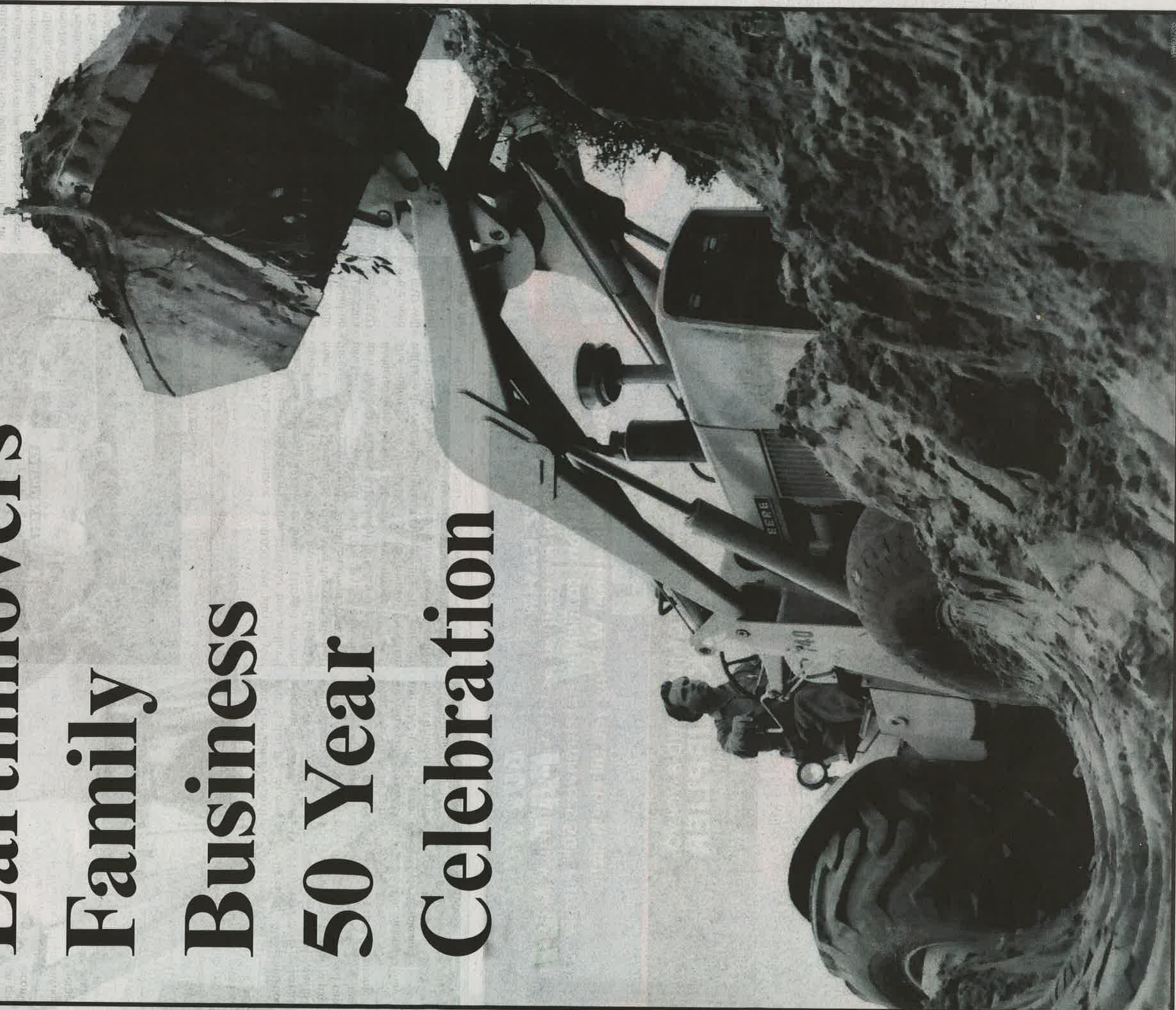


PHOTO: JAMES

EICHLER EARTHMOVERS ADVERTISING FEATURE

Celebrating 50 years of earthmoving memories

WHEN Cecil Eichler, commonly known as Cec, helped a local farmer rebuild the levee banks after the 1956 Murray River flood, he had no idea that 50 years later his business would still be thriving.

The farmer gave Cec an old tractor as payment for his work, and from there Cec's love of earthmoving was borne.

Cec was the youngest son of twelve children, and grew up on a farm just outside of Mannum. He didn't care much for school and always wanted to stay home and help his dad on the farm.

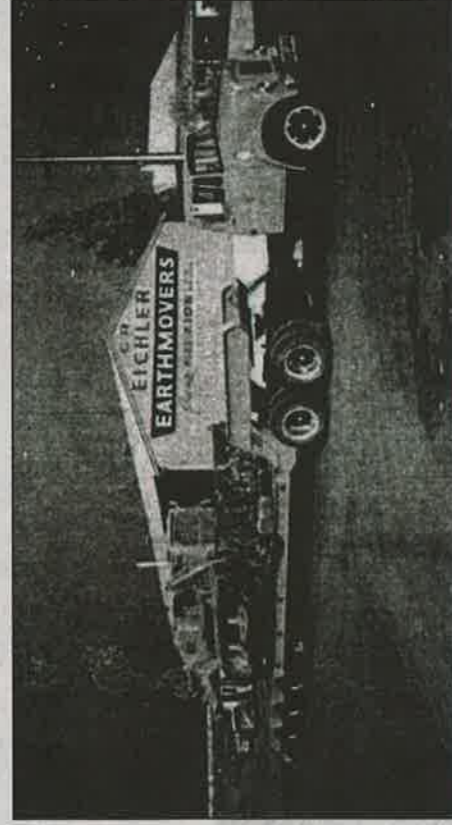
He thought outside work and tinkering with tractors was far better than learning to read and write. However, in his later years of business life, it was truly an amazing feat to run a business with minimal education.

In 1970, he and his wife, Claire, registered the business of Eichler Earthmovers Pty Ltd, some years after he worked as a sole proprietor of C. R Eichler registered firm.

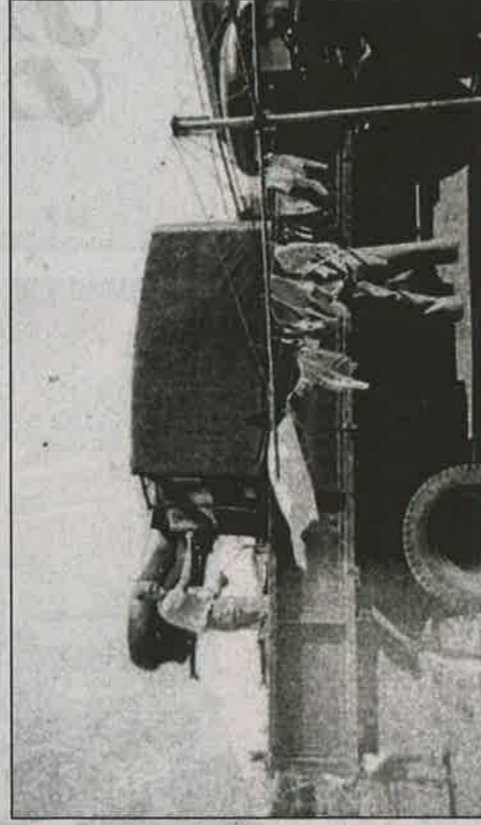
After Cec passed away suddenly in 1991 at 57 years of age, Claire, Cec's daughter Kerry and her husband Shane took over the business with Claire retiring in 2005.

"For us personally, we have always been grateful for the opportunity to take my dad's modest business from his passion to where it is today, there have been so many great moments and achievements in 50 years," Kerry said.

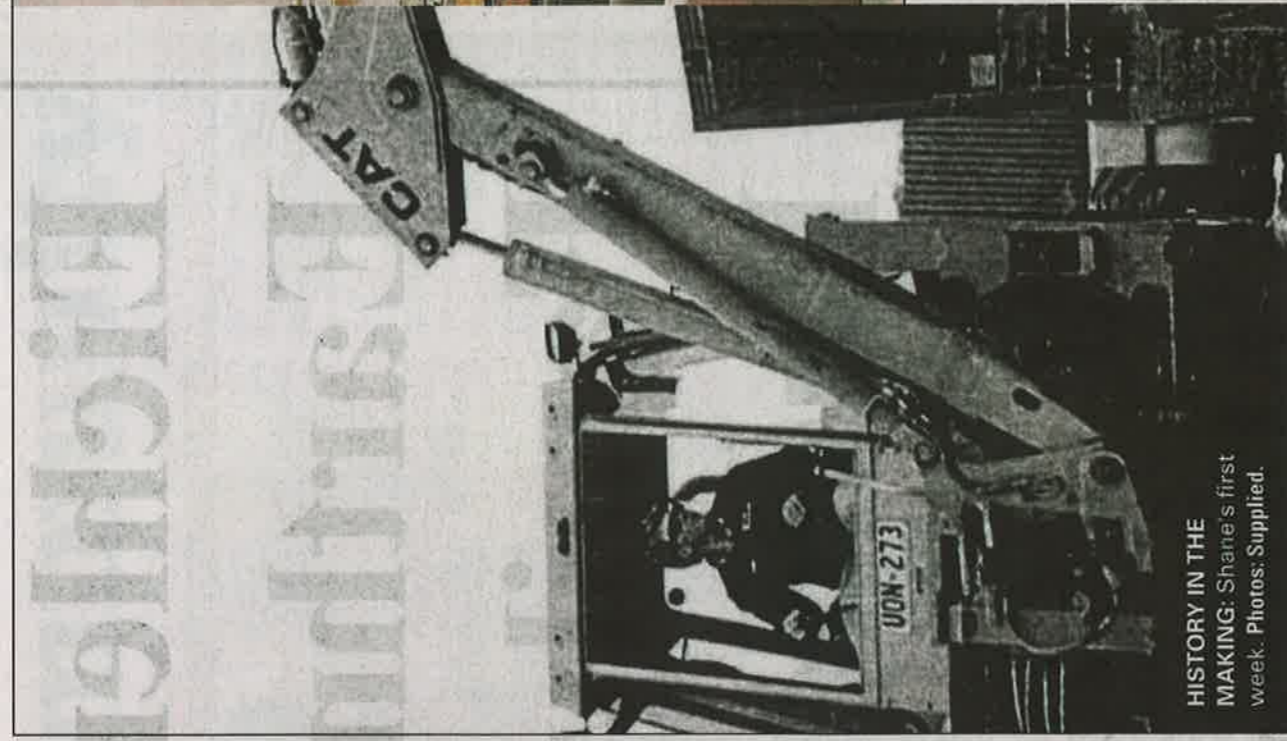
Read more about this 50-year family venture on pages 16-21.



Eichler Earthmovers original entrance.



The early days.



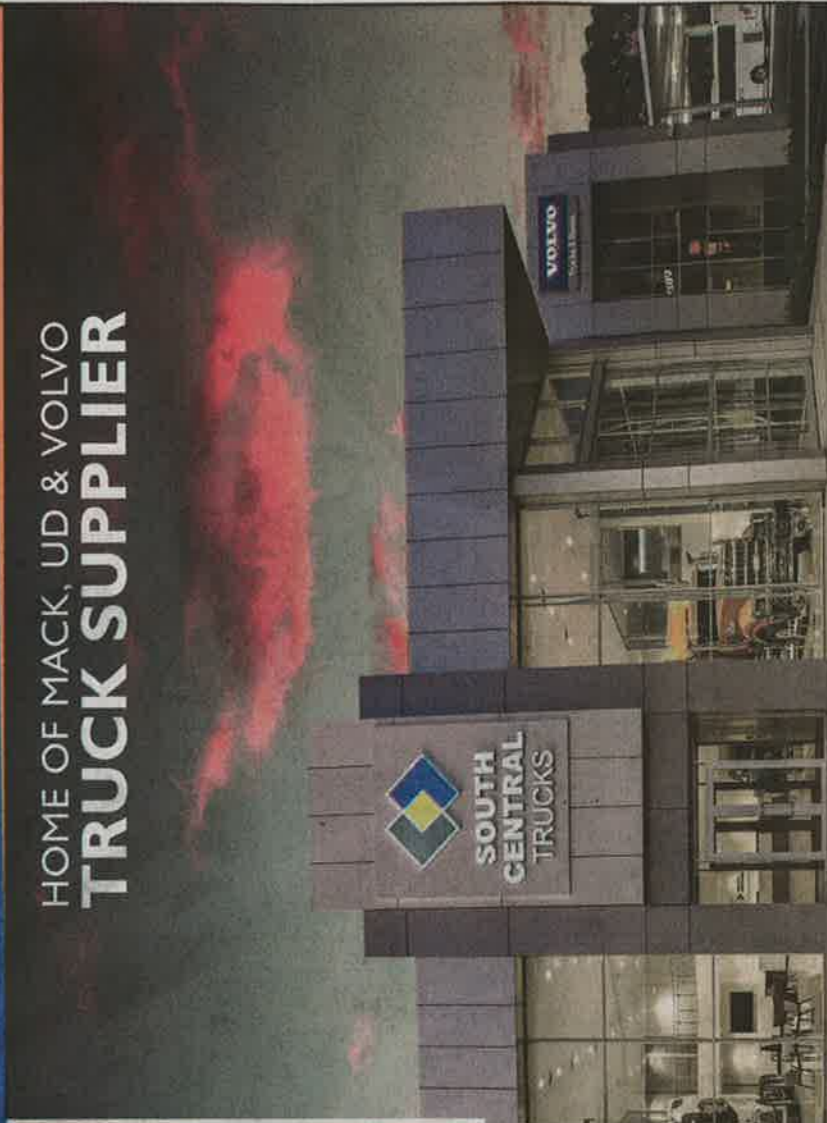
HISTORY IN THE MAKING: Shane's first week. Photos: Supplied.

50

Congratulations to Kerry & Shane

From the entire team at South Central Truck & Bus, congratulations to Eichler Earthmovers 50th Family Business Milestone! Wishing you all the best!

HOME OF MACK, UD & VOLVO
TRUCK SUPPLIER

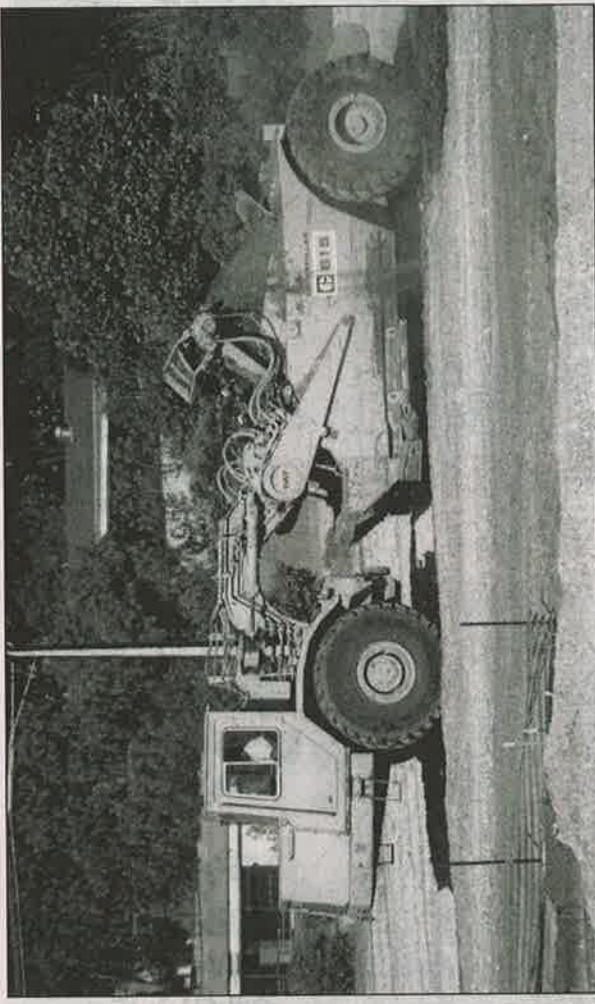
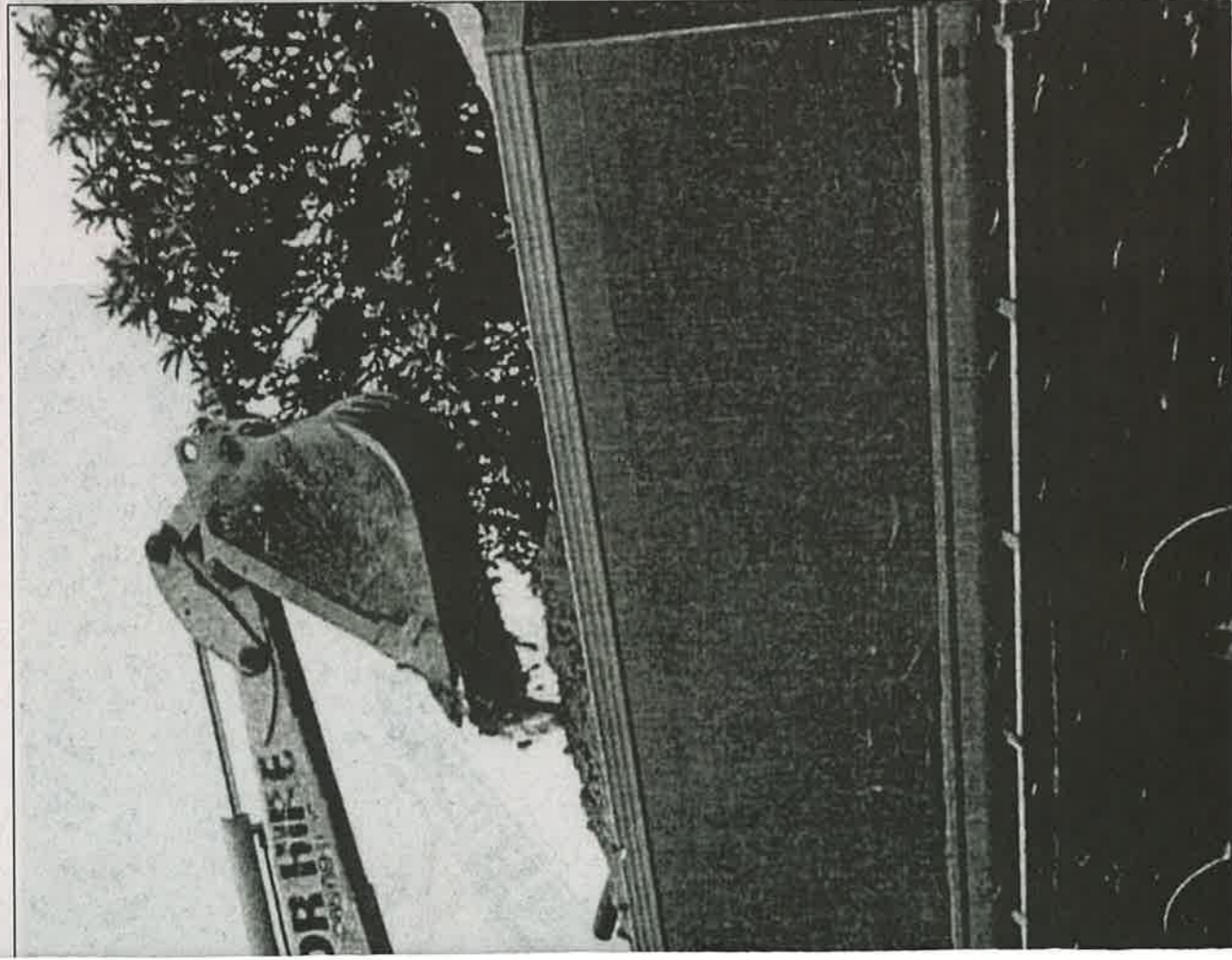


**SOUTH CENTRAL
TRUCK & BUS**

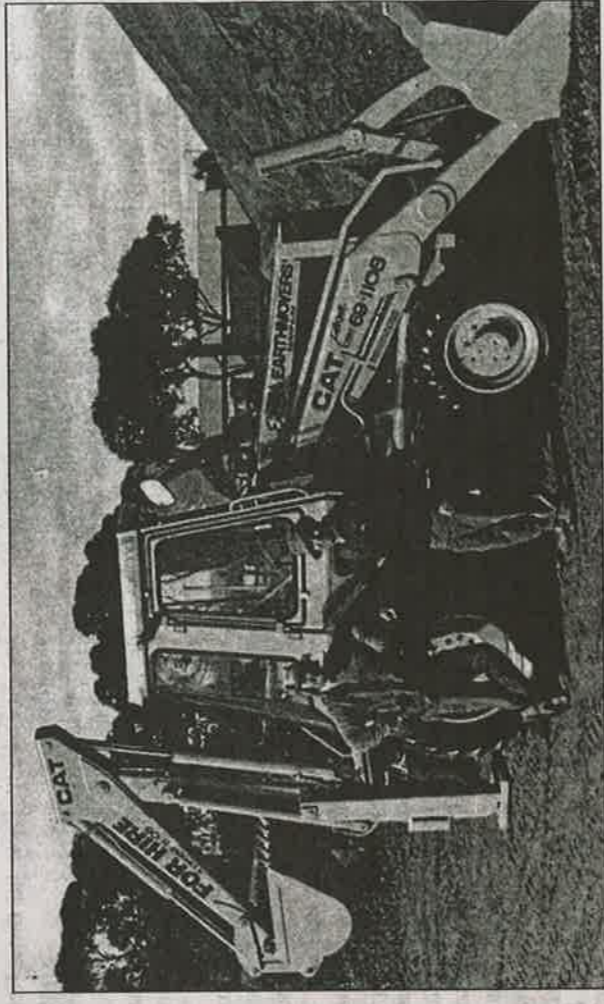
465 Grand Junction Road
Wingfield SA 5013
1800 627 444 | sctb.com.au



EICHLER EARTHMOVERS ADVERTISING FEATURE



CAT scraper at work.



Cec Eichler and Neville Cradock, 1987.

peats
SOIL & GARDEN SUPPLIES

put life into your soil
Quality products for all landscape projects

What a milestone!

Congratulations from
the team at Peats Soil
& Garden Supplies
www.peatssoil.com.au

**TR MALE
TRANSPORT**

provides daily transporting
services between
Adelaide, Melbourne, Mannum
and surrounding areas for
general produce and freight.

Well done
Shane & Kerry

(08) 8569 2144

47 Walker Ave, Mannum SA 5238



VF4637296

BBQ Boat Hire
REEDY CREEK RETREAT

*Thank you very much Kerry & Shane
Congratulations!!!*

Great working with you, the prompt and flexible Eichler service
helping us set up our new venture in Mannum is a great help!!!
Plus giving us the opportunity to help out on the big subdivision
projects in Two Wells with the other business.

Hopefully a lot more successful & happy decades to come!!!
Thank you Louise and Rufus

Rufus & Louise Scheffers
reedycreekretreat01@gmail.com
www.reedycreekretreat.com.au

0473 339 766



Reedy Creek Retreat

VF4638215



*Penrice and Southern Quarries are very proud to be suppliers of quality quarry products,
landscape aggregates, agricultural lime and gypsum.*

**We congratulate Kerry and Shane and the Eichler Earthmovers team on this fantastic milestone
of 50 years of family business and wish them all the very best for the ongoing future.**



Penrice Quarry & Mineral
an ADBRI company

8563 8823
Penricequarry.com.au
256 Penrice Road,
Angaston 5353



**SOUTHERN
QUARRIES**

an ADBRI company

8334 4745

Southernquarries.com.au
Main South Road,
Sellicks Hill 5174

VF4638160

EICHLER EARTHMOVERS ADVERTISING FEATURE

What it was like in the early days

It all began in the seventies and eighties

IN THE early years, Eichler Earthmoving was involved in working for the local Council, supplying cartage trucks and undertaking roadworks, footpath preparation, car-parks, work on reserves and boat ramps.

The Highways Department (now DPI) and EWS (now SA Water) was another government department that contracted Eichler Earthmoving for plant hire during the 70s and 80s.

Then Eichler Earthmoving owner, Cec Eichler saw a need for ready mixed concrete supply to the area and commissioned a plant to batch and deliver concrete in the early 70s.

"In those days, cement was purchased by the bag and 40 kgs at that," Cec's daughter, and current owner of Eichler Earthmoving, Kerry Yeates said.

"To mix concrete, they had

Team, Murray Bridge that he sat on the board for the very notorious Rowley Park Speedway, Adelaide.

Eichler Earthmoving was appointed to assist with the earthworks for its predecessor Speedway Park in the late 70s.

It wasn't until the late 80s, when Cec has some health issues that they took on someone in their office part-time, until their eldest daughter Kerry joined the business at seventeen years of age.

Kerry always said she was the "tomboy" of the family, and as a young girl growing up, spent countless hours with her dad, going with him in the truck and fond memories of sitting on the side of a tractor holding on for dear life (something that would not be done these days) and loving it.

"It was better fun than a

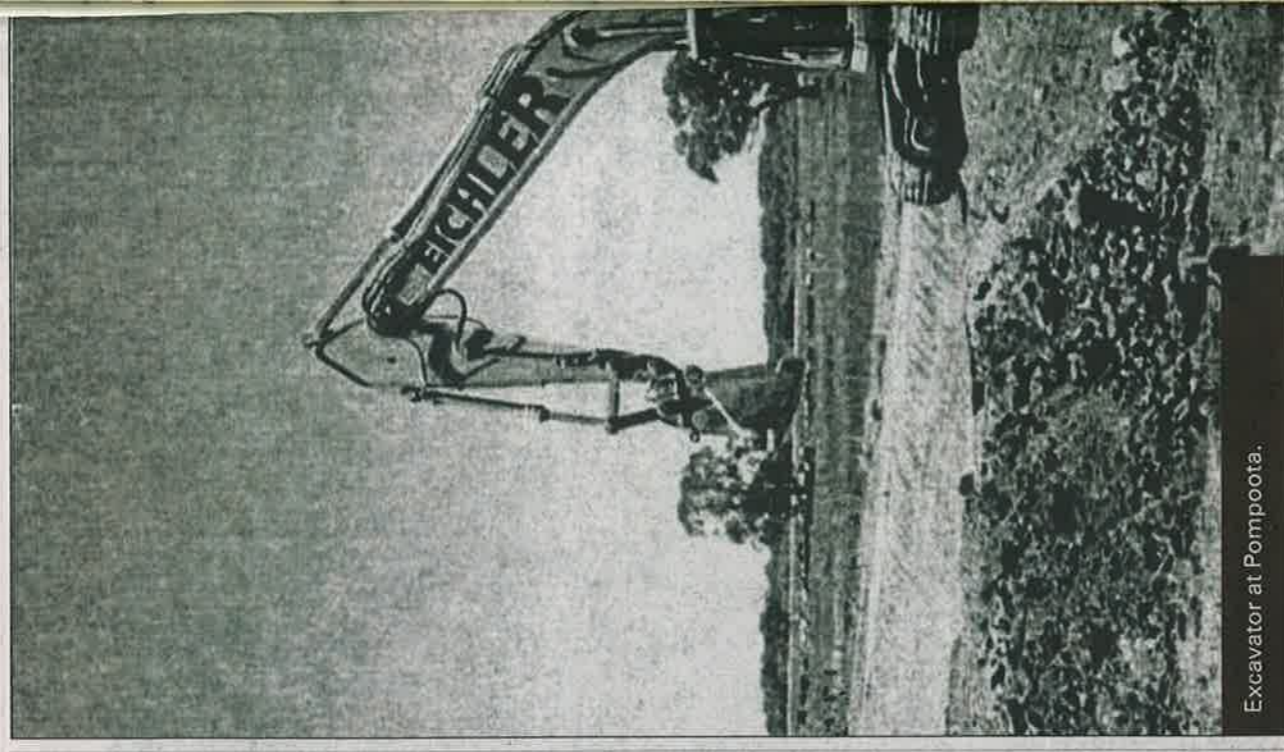
ride at the show," Kerry recalled fondly.

Kerry went onto work alongside her mum and dad until Cec passed away.

Those years were tough, Claire and Kerry, along with Kerry's partner Shane who had only just commenced working for the business that year, continued on, despite a challenging economic environment.

"We stayed on to help Mum run the business, I was working as a nurse part-time and in the office," Kerry said. "It was the early nineties, interest rates were at an all-time high, projects were scarce, government departments were purchasing their own plant and equipment and undertaking their own works."

Eichler Earthmoving had to reduce its staff and think about where they were going.



Excavator at Pompoota.

Congrats

**Kerry & Shane on Eichlers
50th in Earthmoving.
All the Best from Nando
and The Team.**

**Kerb and Gutter Specialists
Commercial & Industrial**

No Job too Small
Hand Laid Kerb & Gutter Machine Laid
Kerb & Gutter Grain Silo Concrete Pads
General Concrete Work

0429 806 747

B. & A.
PASCALE
& SON
PTY. LTD.

Lic. No 10407



Old School ways utilizing
Modern Technologies

Big River Toyota



Congratulations
on being
50 years
Strong

1464 Old Sturt Highway
Berri SA 5343
(08) 8582 2277

VR668719





CLAY & MINERAL

Congratulations
to Eichler Earthmoving
on the last 50 years and
good luck with the next 50!





- Quarry Products
- Trenching Sands
- Loams
- Thermal Sands


Call Ian 0419 512 266
www.claymineral.com.au

EICHLER


landscaping


earthmoving


concrete

Need a small earthmoving job done? Difficult area? Tight access?

We have a large range of small equipment with experienced operators to achieve your desired result.

We guarantee to beat any genuine written quote.

~No job too small~

House Sites * Driveways * Domestic Works * Septic Tank Installations
Backyard Blitz * Landscaping * Retaining Walls * Horse Arenas

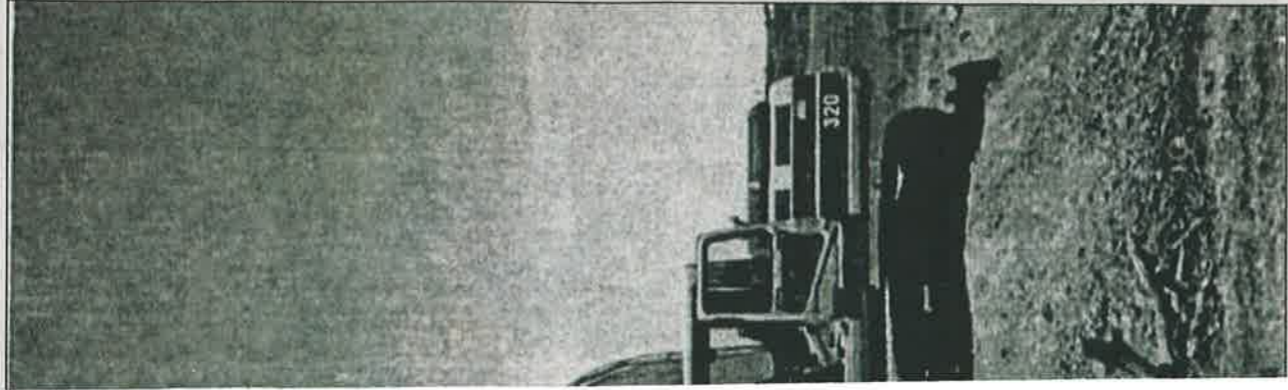
Looking at building a subdivision or do you require large
agricultural machinery for your farm?

Sub Divisions * Roads * Dam Construction * Laser Levelling
Rural Works * Civil Construction * Kerbing * Stormwater

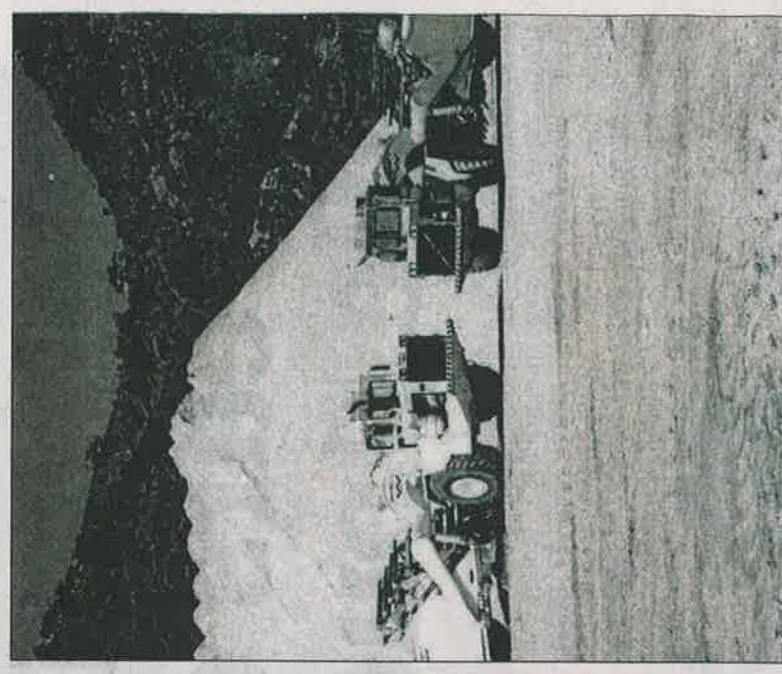
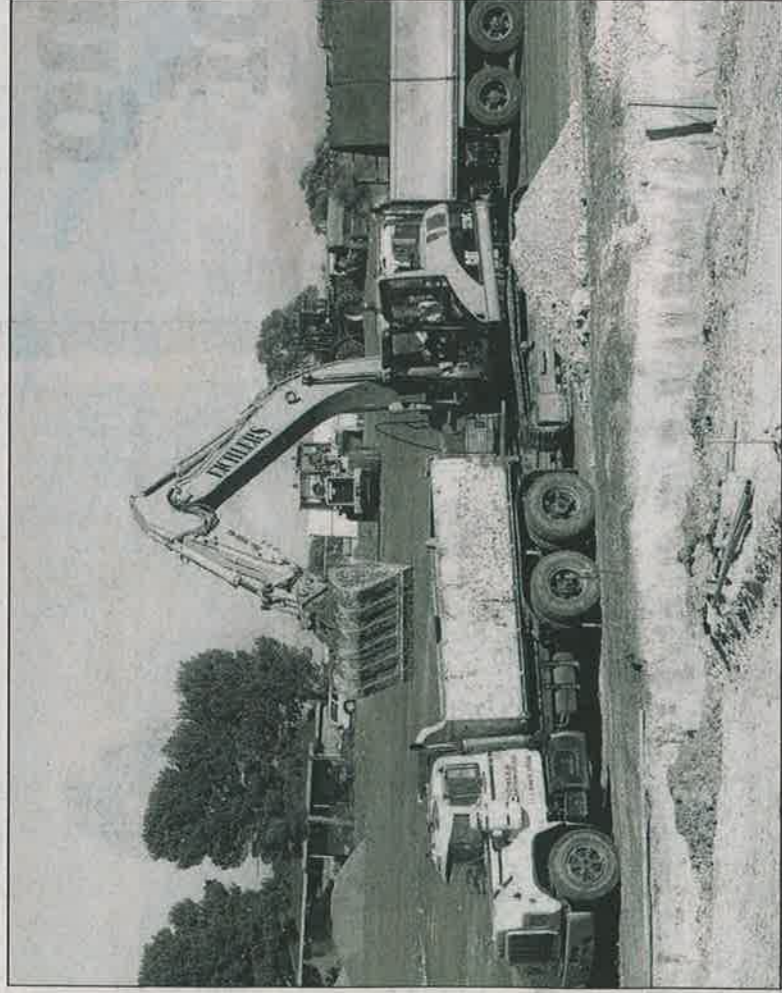
Competitive priced truck hire and earthmoving equipment
with experienced operators!

Truck Hire * Tandem Tipppers * Watercarts * Dolly / Quad or Tri Axle Low Loader combinations

Phone: 8569 1108 or 0407 617 111
Monday-Friday 8:30am to 5pm Saturday 9am to 12 midday



First Mack truck and excavator.



SCRAPERS: Readymix pit. Photos: Supplied.

Successes and business ventures

PRIOR to 1991, some of Adelaide and regional the largest projects Eichler Earthmoving undertook included hiring machinery and operators to projects throughout Adelaide with Readymix. This took them to assist in the construction of West Lakes and Football park, several sand mining pits throughout the foothills

of Adelaide and regional South Australia.

"This put us on the map," current Eichler Earthmoving owner, Kerry Yeates said.

After Kerry's father Cec passed away, Kerry, her husband Shane and her mother Claire took the company into further ventures. The team of three hired a full-time office

manager, an estimator and extra staff to quote on projects that were now being offered in the region. The days of a handshake to undertake a job were now over, and the business ventured into its next phase. Successfully

soon after, Eichler Earthmoving took on a range of civil works projects, such as the

Riverland Filtration Plants in several towns along the Murray as well as the Sturt Reserve upgrade for the Rural City of Murray Bridge and major stormwater projects in the council area and that of the Mid Murray Council.

"There are not too many areas of the state we haven't worked in," Kerry said.

"From feedlots preparation in Clare to Silo Pads in Arno Bay, along with roadworks in the state's southeast. Construction of roundabouts in the Riverland and site works for some of the regions grape producers. Vine ripping in the Barossa Valley and Dam construction in the Adelaide Hills."

John, Liz & the crew at Access Capital congratulate

Eichler Earthmovers

on 50 successful years of operation

Well done to Shane, Kerry & the Eichler team on achieving this significant milestone



**ACCESS
CAPITAL**

Finance Brokers

Access Capital - Established in 1989

Family Owned and Operated

Totally Independent

Local Staff - Local Office

Leading & Award Winning Equipment Finance Broker
in SA and NT

08 8334 2100 | www.accesscapital.com.au

EICHLER EARTHMOVERS ADVERTISING FEATURE

Celebrating 50 years of milestones

EICHLER Earthmoving have been pre-qualified contractors to SAPN (formally ETSA), SA Water and many regional Councils.

Recent times have seen the business work with the DPTI on many of their roadwork projects and upgrades around the state and far north.

"Over the years the workload has grown, the staff numbers too, and so has the paperwork," Kerry said.

"Regulatory bodies have enforced so much compliance on industries such as ours, and we have spent many hours developing systems and supplied and undertaken training to keep up to date with it all."

"One of our noblest tasks is carrying out the preparation of graves for the Mid Murray Council cemeteries.

Over the years, Eichler

My dad prided himself of this task and we take his approach with it still today. It's the last thing I get to do for someone,' he would say."

"We take pride in any job, large or small, easy or intricate. We have had to diversify into so many areas over time, and have employed hundreds of people since our commencement."

"Some from the same family. We treat all of our staff like family."

"We have had quite a few staff earn their ten years long service leave, and a handful of these have had over 20 years of service."

"Many staff have left and come back to work for us, so we feel proud that they choose to return. Only a few years ago, our resident mechanic retired after close on thirty years of service."



Shane will be celebrating his 30 years of service with the company in Feb 2021, while Kerry has been with the company for 33 years

Shane has had a big involvement in football and successfully played and coached in Mannum's premiership teams of 2003 and 2013 respectively after a stint in the SANFL.

"We instil perfection into our staff and the delivery of their work, and try hard to keep a work-life balance and admirable culture amongst the team," Kerry said.

"The opportunities for advancement have always been a focus, as our success has come from having multi-skilled staff."

In 2009 civil construction

trainee, William Cathro,

was nominated for the Civil Trainee of the Year Award and in 2003 Eichler Earthmoving won a Workcover Safety Award.

"In 2017 we received an award from our industry body the South Australian Civil Contractors Federation, awarded at their annual dinner. It was such a wonderful

SELECTA™
SILVAN'S SPOTPAK REDLINE 25 LITRE TROLLEY SPRAYER
FULFILLS MANY NEEDS

- Ideal for weed control
- Rechargeable or 12 v options
- Versatile spraying solutions for mower or quad bikes

Datish Irrigation & Fodder are proud to have worked with the wonderful local team at Eichler Earthmoving for decades. We look forward to working with them for many more. Well done on 50 family years in business.

Available at
 STRATHALBYN | MURRAY BRIDGE
 41 Milnes Road | 151 Adelaide Rd
 Ph: 8536 4422 | Ph: 8532 2711
www.datshirrigation.com.au

P-TEC CONTRACTING PTY LTD
PH: 0418 691 006

Congratulations on your 50th from Peter Wilkinson on behalf of P-Tec Contracting.
All the best for the future.

VR48796

READ BETWEEN THE LINES

Increase your market share via
 STRATEGIC SOCIAL MEDIA
 PRINT & DIGITAL MEDIA
 ASK PETER HOW!
 0476 818 812

DO THEY "REALLY" SEE YOU

Standard

The Standard congratulates Shane, Kerry & Staff for building Eichler Earthmoving into an iconic business that continues to service both our local community and the broader SA community. "50 Quality Years".

VR4938156

GEARS 'N' COGS

Mechanical Repairs and Fabrication
www.gearsncogs.com.au

Providing a diverse range of Mechanical, Hydraulic, Fabrication & Machining services

Eichler Earthmovers has grown and established a First Class reputation within Earthworks.
 Keep up the great work Kerry & Shane

VR48796



Wide range of services

BY EXTENDING the three major arms of their business - Earthmoving, landscaping and building supplies along with ready mixed concrete supply and rubble crushing - Eichler Earthmoving is now a one-stop-shop.

and trucks allow us to run several projects at once, but always love to offer our experienced operators to our locals."

"It's extremely important to us to be supported locally as we remember fondly that it was the locals that helped commence the business and allowed it to grow to what it is today."

"Some may think we are expensive as we have grown, however, we offer free no-obligation quotes and all we ask is the opportunity to quote."

"You may be pleasantly surprised and our tagline always has been 'allow us to get the job right the first time'."

"So whether it is your driveway that needs repairing or you have a small trench to be dug, a shed or tank site to be prepared - We can offer all of that. If we can't do it, we can always recommend someone that can."

"As an addition to our subdivision plant and equipment we recently acquired a hydroseeding machine, this allows us to control erosion and prepare grassed areas."

The retail landscape depot at Mannum offers the region building sands and aggregates, landscaping and gardening needs, both for the commercial and residential sector.

Eichler Earthmoving sells firewood and mulches, decorative stones and pebbles and have a regulated weighbridge where they can weigh and accurately charge customers for their purchase.

"Delivery is offered and we have delivered to customers as far as Cadell and Karoonda," current Eichler Earthmoving owner, Kerry Yeates said.

"We love getting out to the holiday home owners along the River Murray and easily arrange their requirements by phone."

"Our large fleet of over 60 pieces of plant, machinery

none of them are studying engineering or business but you never say never, right?"

Kerry and Shane are currently looking for more staff due to extra projects in the area, if you have an interest in plant operations, maintenance or office administration contact Eichler Earthmoving on 0439 877 849 or kerry@eichler.net.au

she thinks the company will remain in the family when she retires, Kerry said, "I think if my dad was asked that question when his three daughters were young adults he wouldn't have thought his eldest and only daughter that worked in the business would have gotten this far."

"History repeats itself as we have three daughters and

range of projects and we have been able to establish a long-term reliable relationship with many of our clients, who continue to come back to us year after year."

As for the future generations of the business, Kerry and Shane have three daughters who have taken up different career paths and options. When asked if

surprise win."

"We undertake all operations of civil works with our staff and fleet of machinery, so that we only have to outsource very little. In an ever-changing industry, we have seen many local competitors come and go, however, our aim is nothing is too hard, too large or small - we attempt to take on a whole



Earth Testing Services in an established NATA accredited soil laboratory located in Salisbury South. We offer over 22 years experience, with highly knowledgeable staff. Servicing metropolitan Adelaide and wider regional areas, providing compaction testing, soil analysis and level 1 site supervision for a range of civil projects.

2/24 Pentland Road, Salisbury South
earth@earthtestingservices.com.au
(08) 8250 5675

Congratulations Kerry & Shane on 50 years of Eichler Earthmovers. It has been a privilege to work with you guys and look forward to many more projects in the future



SITECH
 SITECH Construction Systems, your local Trimbale Dealer, is a proud supporter of **Eichler Earthmoving Landscaping Concrete** who has been servicing South Australia and beyond for 50 years this year.

Congratulations!

Call: 1800 SITECH



Congratulations Eichler Earthmovers on your 50th Anniversary.

Wishing you all the best on this special occasion and for many more years ahead. Cappower look forward to supporting you over the years to come.

Since 1972 Cappower has set the standard in equipment management solutions, providing our customers with unrivalled support in the construction and mining industries

Ph: 8343 1600 | www.cavpower.com



EICHLER EARTHMOVERS ADVERTISING FEATURE

Thanks to the community

DURING the 90s, Eichler Earthmoving saw an opportunity in tendering on housing subdivisions.

"As our experience in civil works along with sewer, water and power installation became our forte, we thought we could combine this with our roadbuilding, footpath and kerbing experience to take on a whole subdivision project," current Eichler Earthmoving owner, Kerry Yeates said.

"Prior to this we would be a subcontractor for a firm that undertook this work, but Shane and I felt that the business was ready to handle it in its own right. Since the late 90s, we undertake contracts for some of South Australia's largest home building companies, and work with a great range of engineering firms that engage the contractors to carry out these projects."

"Hickinbotham homes, Oakford Homes, Rosedale Homes and private developers have allowed us to promote a large CV of housing estates ranging from Two Wells, Barossa Valley, Murray Bridge, Allenby Gardens, Nairne, Mount Barker, Moad-



na and of course, Mannum." The original owner of Eichler Earthmoving, Cec Eichler, was a generous man and you would often find him donating his time and machinery to local sporting clubs and charities. He provided all of the earthworks

of the Mannum Football Netball, Tennis, Bowling, Golf, Soccer, Horse Riding, Motorbike, Basketball, Rowing and Gun clubs including the Imperials, Ramblers and Myppolonga, Adelaide Football Club, Paskeville Football Club, Murray Bridge

Association, Unity College, Pedal Prix, Mannum Community College and Mannum Kindergarten. They have also helped local emergency services such as the CFS, Mannum Hospital, Mannum Auxillary, Aminya Homes for the Aged and the

RSL. They have donated to charities such as the Cancer Council, National Heart Foundation, Blind Foundation, Variety SA, Make a Wish Foundation, RFDS and more recently, the Little Heroes Foundation. Eichler Earthmoving has been involved in and charitable to local events such as the Mannum Go Karts, Mannum River Festival, Mannum Fishing competition, Thumpermats Motorcross, South Australian Motorcross title, Mannum Truck and Ute Show, Mannum Show Society, Tour Down Under, Mannum Dock Museum events, the Leisure Centre, Southern Districts Car Club, Murray Bridge Motorcross Park, Loxton Christmas Pageant and Street lights, Mannum and Murray Bridge Christmas Pageants, Murray Bridge Speedway, Rowley Park Speedway, Speedway Park, Adelaide International Raceway, Virginia and Ponde Sandrags. Through their love of motorsport, Cec and Kerry have supported many individual racing enthusiasts over the 50 years of Eichler Earthmoving.



CIVIL SURVEYS & DESIGN PTY LTD

**LICENSED AND ENGINEERING SURVEYORS
PROUDLY PROVIDING SURVEYING SERVICES TO
EICHLER EARTHMOVERS FOR THE PAST
10 YEARS**

- Boundary Surveys
- Land Divisions
- Community Titles
- Sub Division Design
- Project Management
- Lease Free Holding
- Contour Plans
- GPS Surveys
- Engineering Surveys
- Vineyards
- Horticulture
- Irrigation & Drainage
- Dam Volumes & Areas
- Building Set Out
- Mining Surveys
- 3D Laser Scanning
- Machine Control

Barossa Office
Unit 3, 11 Gawler Street
Nuriootpa SA 5355
Tel: 08 8562 4388

Adelaide Office
14 Sunbeam Road
Glynde SA 5070
Tel: 08 8365 1066

info@civilsurveys.com.au
www.civilsurveys.com.au

Reliable
PETROLEUM

*Your local fuel guys
servicing the Murraylands
and the Mallee areas!*



**RELIABLE PETROLEUM ARE
A PROUDLY SOUTH AUSTRALIAN
OWNED AND OPERATED DISTRIBUTOR
OF FUELS AND LUBRICANTS.**

**Reliable Petroleum proudly working
together with Shane & Kerry at Eichlers
Earthmoving for over 20 years.**



Danny 0408 822 646

Ray 0418 851 792

d.cowley@reliablepetroleum.com.au

r.malley@reliablepetroleum.com.au

VR4637405

VR4637922

EICHLER EARTHMOVERS

ADVERTISING FEATURE

Meet the team



SHANE AND KERRY YEATES: Are proud to introduce their team.



SHANE YEATES: Has been with Eichler Earthmovers since 1991.



KERRY YEATES: Has been with the company for 33 years.



JOSHUA BOYLAN: Works as a project manager/engineer.



DANNY WALKER: Is the site supervisor of subdivisions working in conjunction with Joshua Boylan.



DEBRA CONNOLLY: Commenced working as the office manager in 1991, she is now part time but is still an important part of the back office.



BARRY EICHLER: Has been with the company for 10 years, working as a truck driver and machine operator.



STEPHEN MATTNER: Is the longest serving employee with 18 years under his belt. Photos: Supplied.

Congratulating Kerry, Shane & all the staff from Eichler Earthmovers on their 50th Anniversary.

What an achievement it is for a local, family owned business to be trading for 50 years. SA Premium Cement are proud to be working alongside you and look forward to a long standing relationship.



Level 1, 126 Churchill Rd North
Dry Creek SA 5094
sapremium.com.au

